

the share



CENTER
SEXUAL HEALTH &
REPRODUCTIVE EDUCATION

17080 Hwy 46 W, Ste. 113
Spring Branch, Texas 78070
830-885-2277
bulverdepregnancy.org

fall 2024
newsletter

From the Executive Director's Desk

Earlier this year, many of you prayed for “Leslie” and “Beth”, who both came to us seeking abortions. In Beth’s case, “Trent”, the father of their unborn child, didn’t feel he could support the pregnancy or their child and asked her to get an abortion. However, Beth bravely chose life for her child, even if it meant becoming a single parent. She also began attending prenatal classes. We are beyond excited to share that, with time, Trent chose to support Beth and their child, joined her for classes and, together, they’re eagerly awaiting the birth of their little one!

Leslie, who even after seeing her child’s heartbeat, didn’t feel bringing a child into the world under her current circumstances, was possible. So she traveled out of state to have an abortion. However, with your prayers, she called us after multiple attempts to obtain the abortion, saying every time she tried, something stopped her! Now, she is preparing for her sweet baby’s arrival. It is because of God’s blessings and your support, through prayers, donations, and volunteering, that we will be able to celebrate the births of these two babies, and others like them!

Kim Barton

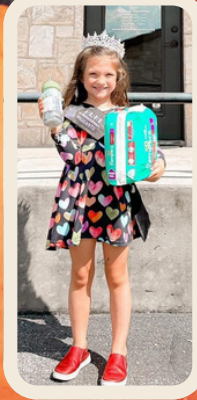
newest pumpkins

IN OUR PATCH



YOU'RE *never too young to* make an IMPACT!

Students from the community have been getting involved by making donations, raising money, and breaking a sweat to help serve The SHARE Center clients well!



BECAUSE OF YOUR *time, giving, & prayer...*

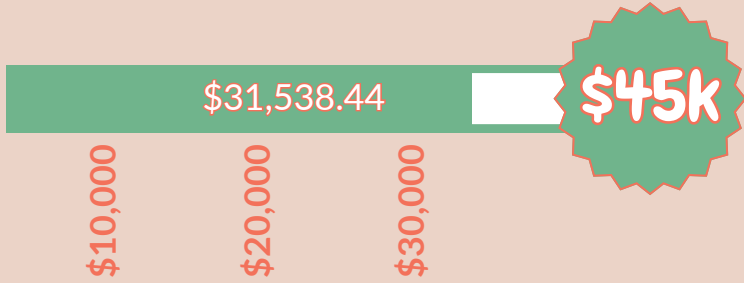




Baby Bottle Boomerang! UPDATE

THANK YOU to the following churches, schools, business, and organizations that have helped us raise money and awareness by participating in a Baby Bottle Boomerang! WE'RE ALMOST THERE!

- Bethel Methodist
- Bracken Christian School
- Bulverde Baptist Church
- Bulverde United Homeschoolers
- Church in the Wildwood
- Home Church
- Hope Arise
- Texas Hill Country Kiwanis Club
- Noah's Ark
- Riverside Community Church
- St. Nicholas Episcopal Church
- St. Paul Lutheran Church
- St. Thomas the Apostle Catholic Church
- Trinity Lutheran



If you or your group is interested in participating, contact Kim Barton at kim@bulverdgepregnancy.org!

Volunteers needed

- childcare volunteers
- male client advocates
- bilingual client advocates
- bilingual nurses (RN)

SCAN OR CLICK TO FOR MORE INFO



DREAMS = COME = TRUE

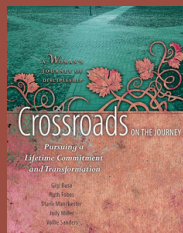
We are thrilled to be able to offer childcare to our clients participating in classes, thanks to YOU & Brad Moore Builders!



NEW

Programming

Monthly Group Bible studies in both English & Spanish are being offered to clients!



This 6-week class covers everything from birth planning and labor to what to expect in the baby's first weeks, culminating with a baby shower for our parents to be!



the share

CENTER
partners

A special THANK YOU to our SHARE Partners for their continued support of \$300 or more each month for three years. Their generosity allows us to serve our clients well. We hope you'll choose one of these businesses when you're in need of the products and/or services they provide, as a token of our community appreciation! If you or your business would like information about becoming a SHARE Partner, contact Kim Barton at kim@bulverdepregnancy.org.



As we continue to grow our services, seeing a 29% increase in clients so far this year, we are excited to be able to provide you a quick, easy, mobile-friendly online giving experience to those who are not already giving online. It allows you to have more control over your giving, and will allow us to communicate updates to you by text, if you choose to receive them. Thank you for growing with us and allowing us the opportunity to better serve and support YOU who makes our work possible every day!



SCAN OR CLICK



SCAN OR CLICK

SHOP
OUR
AMAZON
REGISTRY



A PRO-LIFE COFFEE MOVEMENT



15% of Every Sale
Will Be Donated to:



SCAN OR CLICK TO SHOP

(MAKES A GREAT STOCKING STUFFER!)



STAFF
SPOTLIGHT

KARLA
ROSS

Resource Manager, Karla, joined the SHARE Center in March 2024. She and her husband, Steven, have been married for 30 years and have three children, Eli, Hannah, and Elizabeth. With a background in Social Work, Karla homeschooled for 20 years. After moving from Boerne to Fischer, in December 2023, she brought her passion for serving others with her, having worked at a pregnancy center in various roles for over 13 years. In her free time, Karla enjoys spending time with family, traveling, Bible study, scrapbooking, singing, and sailing.